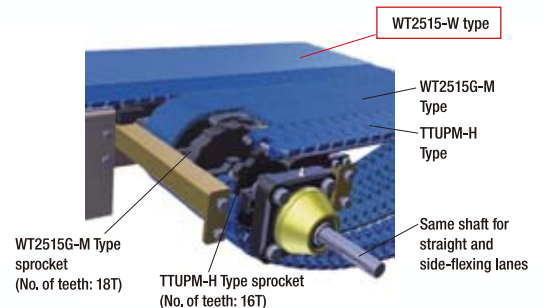
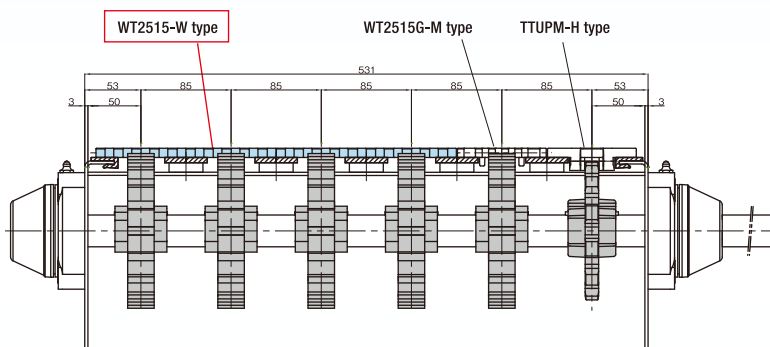
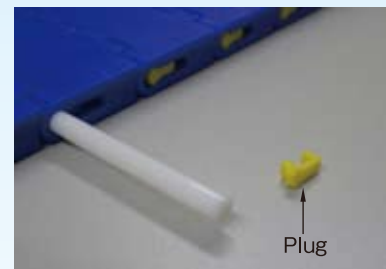


TSUBAKI PLASTIC MODULAR CHAIN WT2515-W, WT2515G-W



Feature

1. WT2515-W chain consists of 25.4mm pitch, combination of 85 & 170mm width module links.
2. It can be mounted in parallel with TTUPM-H & WT2515G-M with the same pitch and thickness.
Easy conveyor design (See diagram below).
3. This plug method can prevent pins from falling off. Easy to connect / disconnect chains to minimize maintenance time.
4. Tab guide attachment type is also available.



● Chain model numbering

Model	Chain pitch	Model	Meandering prevention guide	Plate width	Series code
WT	25	15	G	W340	CB
			G: With meandering prevention guide	340mm	CB: Low-friction, wear-resistant type (Blue)

* No space is required between characters and codes.



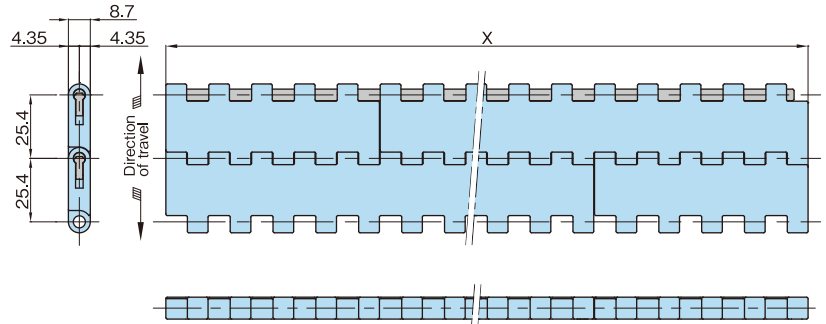
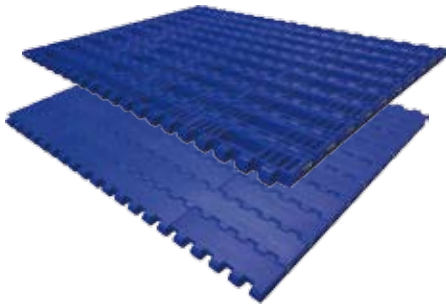
For WT2515-W sprockets, please see sprockets WT-SW2250 for WT2515G-M in a catalogue of "TSUBAKI PLASTIC TOP CHAIN TTUPM-H / WT2515G-M".
For accessory such as wearstrips and conveyor frame support parts, please see a catalogue of "TSUBAKI TOP CHAIN".



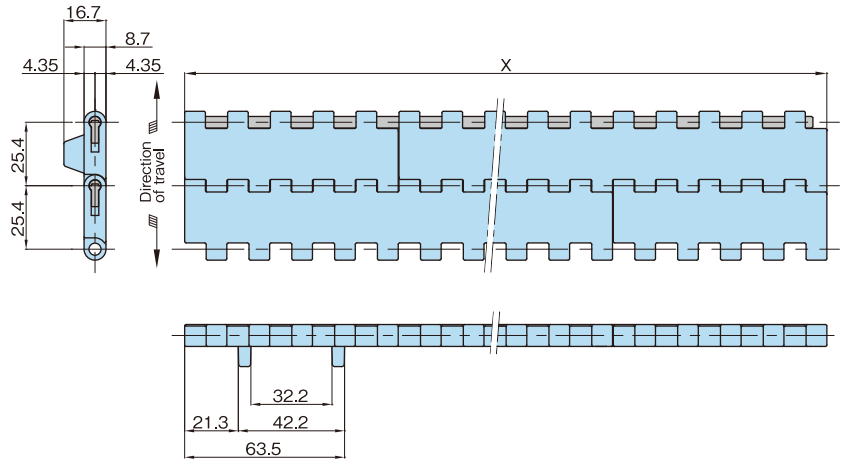
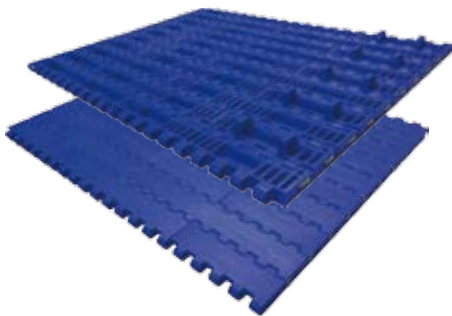
Plastic Modular Chain WT2515(G)-W Type

Straight

No tab guide attachments



With tab guide attachments



Material	Chain Pitch mm	Color	Open Area %	Max. Allowable Load kN/m {kgf/m}	Chain Mass kg/m ²	Max. Speed m/min With Lube No. Lube	Operating Temperature °C	Pin Material
Low Friction Polyacetal CB	25.4	Blue	2	21.6 {2200}	8.6	50	-20 ~ (60) 80	Special Engineering Plastic

- Note: 1. Operating temperature of (60) is for wet conditions.
 2. Values for max. allowable load assume that tension acts uniformly over the entire chain width and will vary according to operating conditions (temperature and speed). Contact a Tsubaki representative for chain max. allowable load graphs. Values for max. allowable load in the table above are for chain that is one meter (1m) in width. To calculate values for other chain widths, multiply the chain width in question by the max. allowable load for one-meter (1m) wide chain. (Example: Max. allowable load for WT2515-W340-CB = 21.6 x 340/1000 ≈ 7.3 kN)
 3. Made-to-order product.
 4. For other high-functional chain materials, please contact us.

Chain (Plastic Pin)

Low Friction CB	Chain Width	No Tab Guide Attachments	With Tab Guide Attachments	Low Friction CB	Chain Width	No Tab Guide Attachments	With Tab Guide Attachments
Product Code	X	Model No	Model No	Product Code	X	Model No	Model No
K13	85	WT2515 -W85 -CB	WT2515G -W85 -CB	K13	510	WT2515 -W510 -CB	WT2515G -W510 -CB
K13	170	WT2515 -W170 -CB	WT2515G -W170 -CB	K13	595	WT2515 -W595 -CB	WT2515G -W595 -CB
K13	255	WT2515 -W255 -CB	WT2515G -W255 -CB	K13	680	WT2515 -W680 -CB	WT2515G -W680 -CB
K13	340	WT2515 -W340 -CB	WT2515G -W340 -CB	K13	765	WT2515 -W765 -CB	WT2515G -W765 -CB
K13	425	WT2515 -W425 -CB	WT2515G -W425 -CB	K13	850	WT2515 -W850 -CB	WT2515G -W850 -CB

- Note: 1. Widths greater than 850mm are available upon request.
 2. Chain width X shown is a nominal width. Chain width is subject to expansion or contraction with changes in temperature. Expansion/contraction rate is 0.00015/°C based on reference temperature of 20°C.

Figures in this leaflet are given in both SI units and gravimetric units (in { }). Figures in { } are for reference.



The TSUBAKI Eco Link logo is used only on products that satisfy the standards for environmental friendliness set by the Tsubaki Group.

TSUBAKIMOTO CHAIN CO.

Headquarters
 Nakanoshima Mitsui Building
 3-3-3 Nakanoshima, Kita-ku
 Osaka 530-0005, Japan
 Phone : +81-6-6441-0011
 URL : <http://tsubakimoto.com/>

Chain & Power Transmission Sales
 1-3 Kannabidai, 1-chome
 Kyotanabe, Kyoto 610-0360, Japan
 Phone : +81-774-64-5022

Note: In accordance with the policy of TSUBAKIMOTO CHAIN CO. to constantly improve its products, the specifications in this leaflet are subject to change without notice. The logos, brand names, or product names in this leaflet are trademarks or registered trademarks of Tsubakimoto Chain Co. in Japan and other countries.